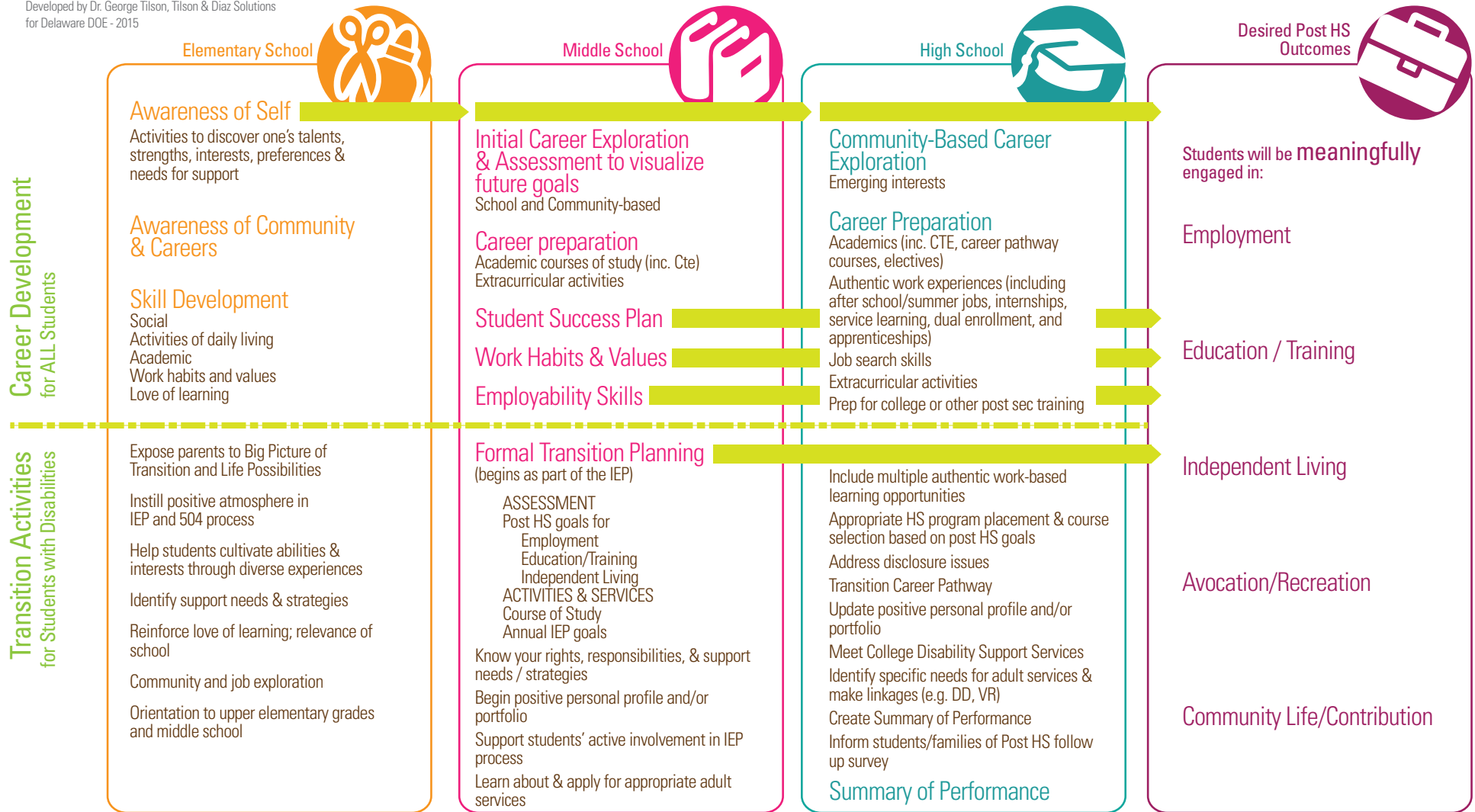


Logic Model for Transition in Delaware

building momentum towards a rewarding adult life

Developed by Dr. George Tilson, Tilson & Diaz Solutions
for Delaware DOE - 2015



RUNNING THEMES: Self-Determination; Person-Centered Approach; High Expectations; Champions/Supporters; Cross-Agency Collaboration and Contribution (programs, funding, & data sharing)